

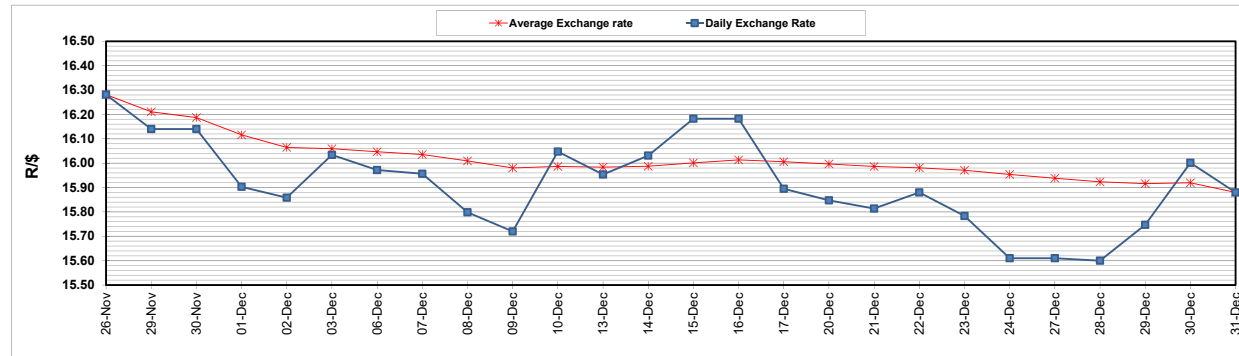
	PETROL 95 ULP	PETROL 93 ULP & LRP	DIESEL 0.05%	DIESEL 0.005%	ILL. PAR.
GAUTENG PUMP PRICE (SA c/l) AS FROM 05/01/2022	1,961.000	1,936.000	-	-	-
WHOLESALE PRICE (SA c/l) AS FROM 05/01/2022	-	-	1,724.680	1,728.080	1,096.688
SINGLE NATIONAL MAXIMUM RETAIL PRICE	-	-	-	-	1,394.000
BASIC FUEL PRICE - 31/12/2021 (SA c/l)	946.932	933.292	923.841	925.762	907.003
PRESS RELEASE CONTRIBUTION TO BFP 31/12/2021 - 31/12/2021 (SA c/l)	973.670	961.670	955.630	961.030	946.128
UNIT OVER/(UNDER) RECOVERY - 31/12/2021 (SA c/l)	26.738	28.378	31.789	35.268	39.125
AVERAGE BASIC FUEL PRICE 31/12/2021 - 31/12/2021	946.932	933.292	923.841	925.762	907.003
AVERAGE UNIT OVER/(UNDER) RECOVERY 31/12/2021 - 31/12/2021	26.738	28.378	31.789	35.268	39.125

ANALYSIS MOVEMENT OF AVERAGE OVER/(UNDER) RECOVERY

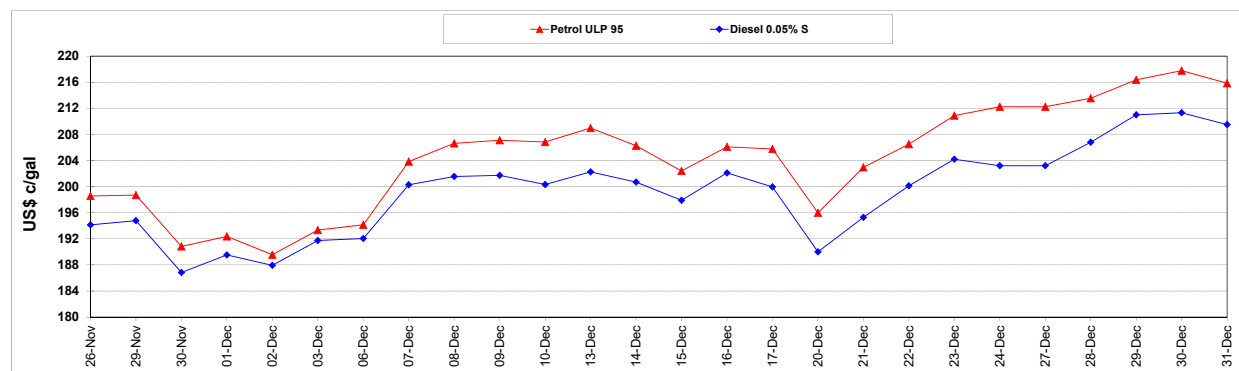
	PETROL 95	PETROL 93	DIESEL 0.05%	DIESEL 0.005%	ILL. PAR.
- MOVEMENT IN INTERNATIONAL PRODUCT PRICES	24.377	26.051	29.485	32.959	36.863
- MOVEMENT IN EXCHANGE RATE	2.361	2.327	2.304	2.309	2.262
AVERAGE UNIT OVER/(UNDER) RECOVERY 31/12/2021 - 31/12/2021	26.738	28.378	31.789	35.268	39.125

R/\$ EXCHANGE RATE - (R/\$15.8800 - 31/12/2021)

EXCHANGE RATE USED IN BASIC FUEL PRICE



INTERNATIONAL PRODUCT PRICES OF BASKET USED IN BASIC FUEL PRICE



BASIC FUEL PRICE IN SA CENTS PER LITRE

